



**SOUTH FEATHERSTON**  
Town and Country School  
"We're a SMALL school doing BIG things!"

# NEWSLETTER

Term 1, Week 6: 10 March 2022

Phone: 06 3089433

<https://www.facebook.com/southfeatherstonschool/>

Skool Loop: <https://www.skoolloop.com/>

Cell: 021-084-29367

email: [office@sfs.school.nz](mailto:office@sfs.school.nz)

Principal: [principal@sfs.school.nz](mailto:principal@sfs.school.nz)

Website: <https://www.southfeatherston.school.nz>

School Bank Account: 12-3290-0003608-00 ASB Masterton

Please remember to notify the school office of any absences before 9am each

Please remember to **SLOW DOWN to 40kms** between the signs near our school.

Remember you must **SLOW DOWN to 20kms** when passing a stationary school bus!!



## Term 1 Dates to Remember

**Thurs 10 March:** Swimming ends

**Fri 11 Mar: Teacher Only Day** – no children at school, please

**Tues 15 Mar:** Board meeting 6pm, Staff Room

**Tues 12 April:** Board meeting 6pm, Staff Room

**Y7/8 Tech dates:** Wed 9, 16, 23 March, and Wed 6 April

**Last Day T1: Thursday 14 April**

## 2022 School Term Dates

**T1:** Wed 2 Feb - Thurs 14 April

**T2:** Mon 2 May - Fri 8 July

**T3:** Mon 25 July - Fri 30 Sept

**T4:** Mon 10 Oct - Fri 16 Dec



**RayWhite**

**Team 'Mr Sold'!**

Steve Chapman  
0276875809

## Arrival Time at School

Just a gentle reminder that children shouldn't be arriving at school before

**8.15am**

unless you have organised that with me (Tana).

While I'm usually here no later than 7.45am, anything could happen which means I haven't arrived - traffic, natural disaster, locusts . . . !

**Good morning everyone!** It's going to be a hot stunner of a Thursday! It's the last day of swimming for us, and in fact we have had one of our best swimming seasons, ever! We have had to cancel only two sessions . . .

**First Teacher Only Day:** I just wanted to get in a final reminder that tomorrow, Friday, March 11, we have our first **Teacher Only Day**. The Ministry of Education provides up to four days across each year where teaching staff are able to participate in professional learning and development (PLD). We use only two of those assigned days per year. We are focusing on planning and teaching differentiated learning through digital learning, a continuation of the PLD project we completed in 2021, as well as starting the mahi with Darren from Nuku Ora (formally Sport Wellington) around our 3 year PLD project in PE, fitness, planning and teaching. Normal school will resume again on Monday morning.

**I'm going to leave this information up here again:** Please become familiar with it so that you are clear about what to do if you or your child tests positive. You will need to let me know immediately so that I can move to the next set of protocols that all principals need to enact for our schools. Email me on [principal@sfs.school.nz](mailto:principal@sfs.school.nz), or ring the school and ask for me: 3089433. A reminder that as of 11.59pm tomorrow night, isolation moves down to 7 days from your positive test result, or until all symptoms have gone. We continue to use stringent hygiene practices here, as recommended by the Ministry of Health. If we ALL do the right thing then we might have an easier time of it than many other schools across the country! Being a small school, we are more susceptible to having to close our doors if too many of our staff get sick.

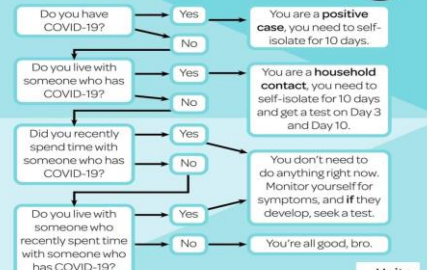
Because these are all symptoms of Covid, please do not send your child to school. While these may be the normal bugs/sniffles that occur, we encourage you to get your child tested.

### POTENTIAL SYMPTOMS OF COVID-19



SOURCE: WHO, CDC | CC-BY-SA 4.0 | 2 MARCH 2021

### What type of contact are you?



To: Kāwanatanga o Aotearoa  
New Zealand Government

Unite against COVID-19

**2022 Easter Raffle:** Thank you to the couple of families that have already dropped in some yummy Easter goodies for our raffle! The tickets are ready to go but Jo will now send them home next week. We really need to hit our fundraising hard this year after two years of cancelled Ag Fair/Lamb & Calf Days, so please help out, whanau!!

**Learning Through Play:** We have another morning today doing our whole-school Learning Through Play and Inquiry time! Last Friday was SO much fun! We had a building station, giant chess, papier mache, salt dough creations (which will be painted up today) . . . check out the pix!



Ngā mihi nui  
Tana Klaricich

"In a world where you can be anything, be kind . . ."

If you haven't already done so, please download our **Skool Loop** app to your phone so you can keep right up to date with what's happening at school and any important notices or emergency notifications: <https://www.skoolloop.com/>

# COMMUNITY NOTICES



Right click on the link for Kapai Kids Club update! [Kapai Kids Club](#)

## South Featherston Lunch Order

ITEMS AVAILABLE	PRICE
Ham & Pineapple Pizza	\$ 3.00
Mince & Cheese Pie	\$ 3.00
Sausage Roll	\$ 2.00
Small Mince Pie	\$ 2.00
Butter Chicken Wrap	\$3.50
Butter Chicken Pie	\$3.00
Bacon and Egg Pie	\$3.00
Vegan Kumara and Cashew Pie	\$3.00
Blueberry Muffin	\$ 1.50
Chocolate Muffin	\$ 1.50

Lunch orders are available every day. Please write name and order, with money inside and leave at the school office before 9am.

Children are to line up outside the staffroom at lunchtime to collect their order.